

# SFTABLE / SFTABLE-R

## Bar Table Assembly Instructions

Max Weight Capacity 200 Lb

201509

### READ ALL INSTRUCTIONS AND WARNINGS BEFORE USING THIS PRODUCT.

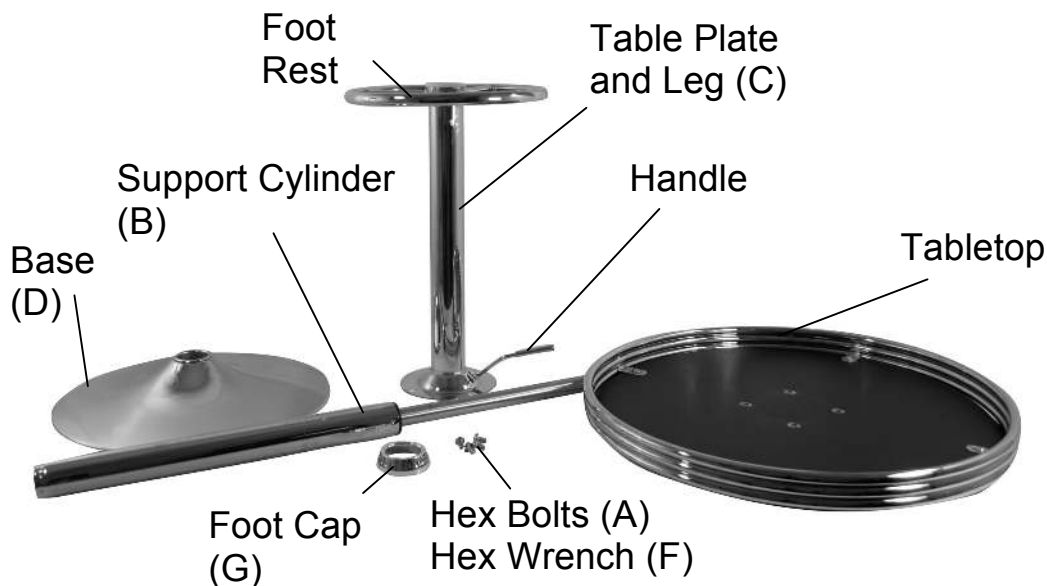
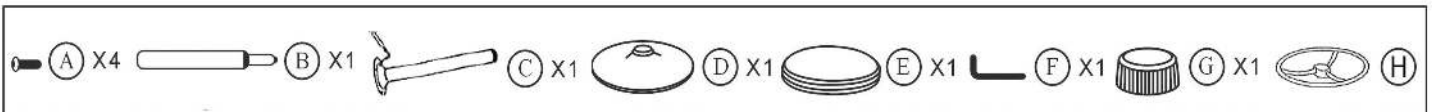
This manual provides important information on proper operation & maintenance. Every effort has been made to ensure the accuracy of this manual. These instructions are not meant to cover every possible condition and situation that may occur. We reserve the right to change this product at any time without prior notice.

**IF THERE IS ANY QUESTION ABOUT A CONDITION BEING SAFE OR UNSAFE, DO NOT USE THIS PRODUCT!**

### DO NOT RETURN THIS PRODUCT TO THE RETAILER - CONTACT CUSTOMER SERVICE.

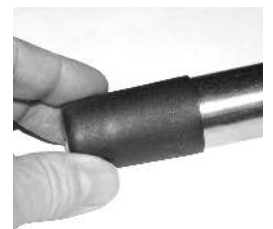
If you experience a problem, have questions or need parts for this product, visit our website <http://www.amerihomebrand.com> or call Customer Service at 1-888-287-6981, Monday-Friday, 8 AM - 4 PM Central Time, or email : [info@amerihomebrand.com](mailto:info@amerihomebrand.com). A copy of the sales receipt is required.

### KEEP THIS MANUAL, SALES RECEIPT & APPLICABLE WARRANTY FOR FUTURE REFERENCE.



### ATTENTION!

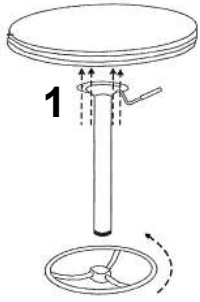
Remove Black Cap



Discard Before Assembly



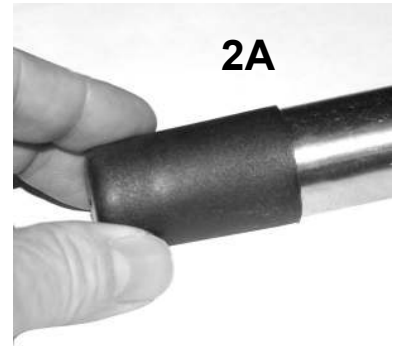
## ASSEMBLY INSTRUCTION



1

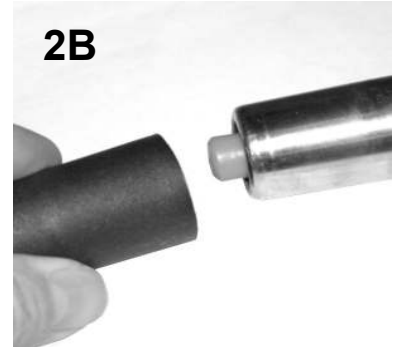
1. Use a hex wrench to attach the Table Plate and Leg to the underside of the Tabletop with the provided hex bolts. Attach the Foot Rest.

2A. A Black Cap protects the hydraulic mechanism on the Support Cylinder.



2A

2B Remove the Black Cap and discard it before assembly. The Orange hydraulic button will become visible.



2B



3

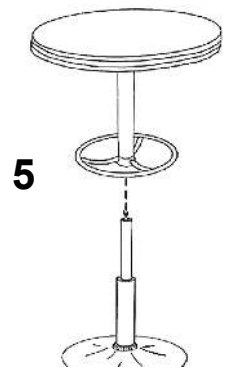
3. Insert the Support Cylinder into the Table Plate and Leg and press firmly.

4. Set the Foot Cap over the hole in the Base. Insert the thicker end of the Support Cylinder into the center hole of the Base, and press down FIRMLY.



4

5. Guide the open end of the Tabletop assembly over the Support Cylinder and firmly press down on the tabletop.



5

To raise the tabletop, grasp the Handle and pull upward without applying any weight. To lower, raise the handle upward and apply weight to the tabletop.

## DISASSEMBLY INSTRUCTIONS



Turn the table upside down. Hit the Metal Clip several times located in the exact center of the bottom of the Base with a rubber mallet to disengage the locking mechanism. The Base will separate from the Table Top and Support Cylinder.



Metal Clip



To remove the Table Top from the Support Cylinder, turn the table upside down, and strike the edge of the Support Cylinder several times where it meets the support leg of the tabletop. The Support Cylinder and Table Plate and Leg will separate with applied force.