

**Item # SSGSB99**  
**SINGLE STAGE GAS SNOW BLOWER**  
**INSTRUCTION MANUAL**



**READ ALL INSTRUCTIONS AND WARNINGS BEFORE USING THIS PRODUCT.**

This manual provides important information on proper operation & maintenance. Every effort has been made to ensure the accuracy of this manual. These instructions are not meant to cover every possible condition and situation that may occur. We reserve the right to change this product at any time without prior notice.

**IF THERE IS ANY QUESTION ABOUT A CONDITION BEING SAFE OR UNSAFE,  
DO NOT OPERATE THIS PRODUCT!**

**QUESTIONS? PROBLEMS? CALL US FIRST!**

If you experience a problem, have questions or need parts for this product, call Customer Service at **1-866-460-9436, Monday-Friday, 8 AM - 4 PM Central Time**. A copy of the sales receipt is required.

FOR CONSUMER USE ONLY – NOT FOR PROFESSIONAL USE.  
KEEP THIS MANUAL, SALES RECEIPT & APPLICABLE WARRANTY FOR FUTURE REFERENCE.

## Item # SSGSB99 Gas Snow Blower

### FEATURES:

Great for removing snow from paved surfaces, such as driveways and sidewalks. It is intended to be used by residential homeowners and is not designed for removing materials other than snow, nor is it designed for clearing off gravel surfaces.

- 2.4 HP / 4,200 RPM
- Noise Level: < 100 dB @ 0% Load
- 99cc OHV, 4 Stroke Air Cooled
- Max Working Width: 18 Inches
- Max Working Height: 10 Inches
- Max Throwing Distance: 29.5 Feet
- Chute Rotation: 180 Degrees
- Wheel Diameter: 6" x 1.5" (.5 inch ID)
- Oil Capacity: 12 ounces
- No-Oil Auto Shutoff
- Oil Type: SAE 5W-30
- Fuel Capacity: 51 ounces (0.39 gallons)
- Fuel Type: Unleaded Gasoline Only 87 rating or higher.
- Do Not Use E85 Fuel
- High Altitude Use: This snow blower is not recommended for high altitude use above 3,000 feet.
- If you are using snow blower above sea level, the snow blower may not function properly because of air flow getting through the mixer.
- EPA Approved



# RECOGNIZE SAFETY SYMBOLS, WORDS AND LABELS

## What You Need to Know About Safety Instructions

Warning and Important Safety Instructions appearing in this manual are not meant to cover all possible conditions and situations that may occur. Common sense, caution and care must be exercised when operating or cleaning tools and equipment.

Always contact your dealer, distributor, service agent or manufacturer about problems or conditions you do not understand.



This is the safety alert symbol. It is used to alert you to potential personal injury hazards. Obey all safety messages that follow this symbol to avoid possible injury or death.



DANGER indicates an imminently hazardous situation which, if not avoided, will result in death or serious injury.



WARNING indicates a potentially hazardous situation which, if not avoided, could result in death or serious injury.



CAUTION indicates a potentially hazardous situation which, if not avoided, may result in minor or moderate injury.



CAUTION used without the safety alert symbol indicates a potentially hazardous situation which, if not avoided, may result in property damage.

## 2 YEAR LIMITED EMISSION-RELATED WARRANTY

THIS ENGINE MEETS U.S. EPA EMISSION STANDARDS UNDER 40 CFR 1054.625. The emission-related limited warranty is valid for two (2) years. Keep the purchase receipt and mail in the product registration card for proof of purchase. Buffalo Corp limits emission-related warranty repairs to authorized service centers for owners located within 100 miles of an authorized service center. For owners located more than 100 miles from an authorized service center, Buffalo Corp will, in its sole discretion, either pay for shipping costs to and from an authorized service center, provide for a service technician to come to the owner to make the warranty repair, or pay for the repair to be made at a local non-authorized service center. The provisions of this paragraph apply only for the contiguous states, excluding the states with high-altitude areas identified in 40 CFR part 1068, Appendix III.

To exercise this warranty, DO NOT RETURN TO RETAILER. Instead, call Customer Service toll free at 1-866-460-9436 (email address [info@buffalotools.com](mailto:info@buffalotools.com)) and you will be instructed on where to take the engine for warranty service. Take the snow blower and proof of purchase (your receipt) to the repair facility recommended by the Customer Service Representative. The warranty does not extend to snow blower damaged or affected by fuel contamination, accidents, neglect, misuse, unauthorized alterations, use in an application for which the product was not designed and any other modifications or abuse.

## 1 YEAR LIMITED WARRANTY (30 Day Limited Warranty for Commercial and Rental Purpose)

This unit is warranted to be free from defects in materials and workmanship for a period of 1 YEAR from date of original purchase. Buffalo Corp. is not liable for any indirect, incidental or consequential damages from the sale or use of this product. Any implied warranties are limited to 1 YEAR as stated, or as otherwise stated, in this written limited warranty. Some states do not allow the exclusion or limitation of incidental or consequential damages. Some states do not allow limitation on the length of an implied warranty. Buffalo Corp will repair or replace, at its discretion, any part that is proven to be defective in materials or workmanship under normal use during the 1 YEAR warranty period. Warranty repairs or replacements will be made without charge for parts or labor. Parts replaced during warranty repairs will be considered as part of the original product and will have the same warranty period as the original product. This warranty gives you specific legal rights, and you may have other rights that vary state to state

### Legal Requirements:

Federal and/or State Occupational Safety and Health Administration (OSHA) regulations, local codes, and/or ordinances may apply to the intended use of this snow blower. Consult a qualified electrician, electrical inspector, and/or the local agency having jurisdiction. Some areas require snow blower to be registered with local utility companies. Additional regulations may apply if this snow blower will be used at a construction site.

**Notice Regarding Emissions:**

Engines certified to comply with U.S. EPA emission regulations for SORE (Small Off Road Equipment) are certified to operate on regular unleaded gasoline and may include the following emission control systems: Three-Way Catalyst (TWC) (if equipped), and Engine Modifications (EM).

**IMPORTANT SAFETY INSTRUCTIONS – SAVE THESE INSTRUCTIONS**

**STOP!**

Before using this snow blower and if you have any questions regarding the hazard and safety notices listed in this manual and/or on this snow blower, call 1-866-460-9436, Monday - Friday, 8 AM - 4 PM Central Time.

**⚠ DANGER**

**Carbon Monoxide Gas:** When in operation, the exhaust from this snow blower contains poisonous carbon monoxide gas. Carbon monoxide gas is both odorless and colorless AND may be present even if you do not see or smell gas. Breathing this poison gas can lead to headaches, dizziness, drowsiness, loss of consciousness and eventually death.

- Use this snow blower ONLY outdoors in non-confined areas.

**⚠ DANGER**

**High Temperatures:** This snow blower produces heat when in operation. Temperatures near the exhaust can exceed 150 Degrees Fahrenheit (65 Degrees Celsius).

- Do not touch hot surfaces. Observe all warning placards on this snow blower denoting hot surfaces.
- Allow this snow blower to cool for several minutes after use before touching the engine, muffler or other areas that are hot during operation and before storing indoors.
- Hot exhaust may ignite some materials. Keep flammable materials away from this snow blower.

**⚠ CAUTION**

**Usage:** Misuse of this snow blower can damage it or shorten its life.

- Use this snow blower only for its intended purpose.
- Allow this snow blower to run for several minutes before use.

**⚠ CAUTION**

**Usage:** Prolonged exposure to high noise levels can be hazardous to hearing. Always wear ANSI-approved hearing protection when operating or working around the snow blower when it is running.

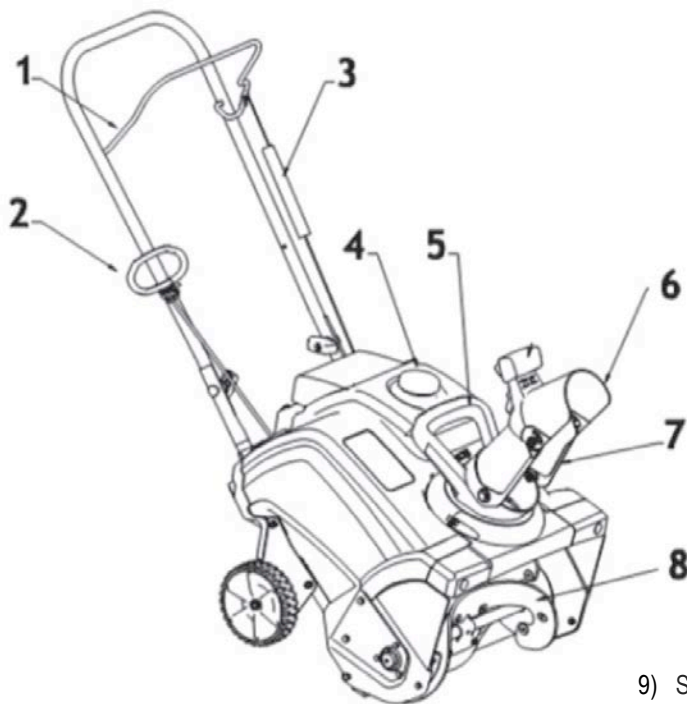
- Do not attempt to clear snow from a gravel-crushed rock surface. This product is only intended for use on paved surfaces.
- Never attempt to make any adjustments while the engine is running (except when specifically recommended by the manufacturer).
- Always wear safety glasses or eye shields during operation, while performing an adjustment or repair, to protect eyes from foreign objects that might be thrown from the machine.
- Do not put your hands or stand near or under the rotating parts. Keep clear of the discharge opening at all times.
- Exercise extreme caution when operating on or crossing gravel drives, walks, or roads. Stay alert for hidden hazards and traffic.
- After striking a foreign object, stop the engine, remove the ignition key, thoroughly inspect the machine for any damage, and repair the damage before restarting and operating the machine.
- If the machine starts to vibrate abnormally, stop the engine and check immediately for the cause. Vibration is generally a warning of trouble.
- Stop the engine whenever you leave the operating position, before unclogging the rotor blade housing or the discharge chute, and when making any repairs, adjustments, or inspections.
- When cleaning, repairing, or inspecting the machine, stop engine and ensure that the rotor blades and all the moving parts have stopped.
- Do not run the engine indoors, except when starting the engine and transporting the machine in or out of the building. Open the outside doors; exhaust fumes are dangerous.

- Exercise extreme caution when operating on slopes.
- Never operate the machine without proper protection and other safety protective devices in place, fully working.
- Never direct the discharge towards people or areas where property damage can occur. Keep children away.
- Do not overload the machine capacity by attempting to clear snow at a too fast rate.
- Look behind you and take care when backing up with the machine.
- Never operate the machine without good visibility or light. Always be sure of your steps and keep a firm hold on the handles. Walk and never run.
- Never touch a hot engine or muffler.

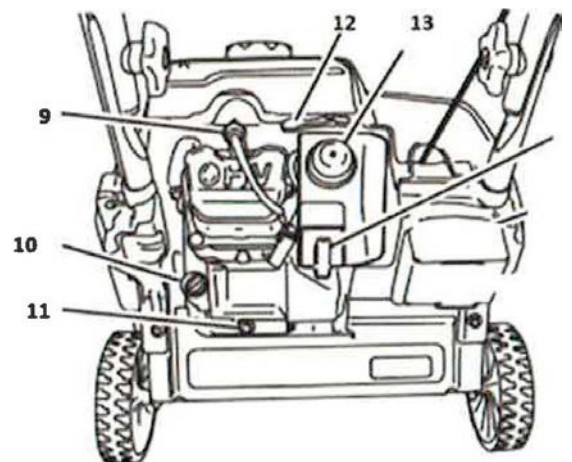
## SAFETY WARNING

- The rotating rotor blades can injure fingers and hands. Stay behind the handles and away from the discharge opening while operating.
- Keep your face, hands, feet, and any other part of your body or clothing away from moving or rotating parts.
- Before adjusting, cleaning, repairing and inspecting the machine, and before unclogging the discharge chute, stop the engine, remove the key and wait for all the moving parts to stop.
- Do not smoke while handling gasoline.
- Do not use the machine on a roof.
- Do not touch the engine while it is running or soon after it has stopped, as the engine may be hot enough to burn.
- Do not change the governor settings on the engine.
- When storing the machine for more than 30 days, drain the fuel from the fuel tank to prevent a potential hazard. Store the fuel in an approved fuel container. Remove the key from the ignition switch before storing the machine.

## COMPONENTS



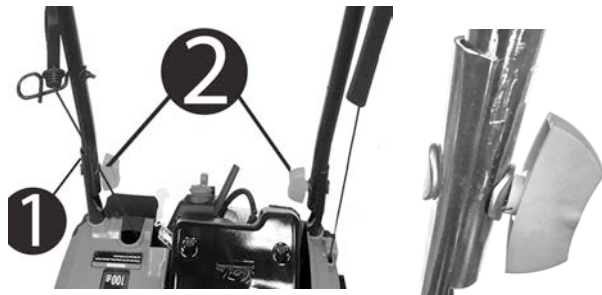
- 1) Control bar
- 2) Recoil start handle
- 3) Spring cover
- 4) Fuel tank cap
- 5) Chute handle
- 6) Chute deflector
- 7) Discharge chute
- 8) Rotor blades



- 9) Spark plug
- 10) Oil fill cap
- 11) Oil drain plug
- 12) Choke lever
- 13) Primer
- 14) Ignition Key

## ASSEMBLY

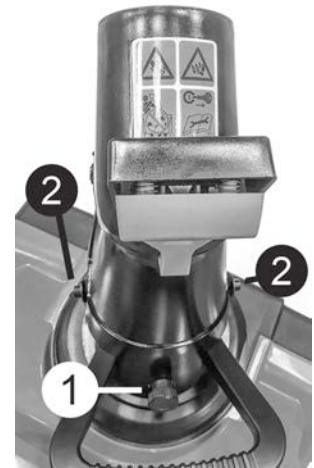
The following items need assembly before use:



1) Installing the handle, ensure the cable is routed to outside of handle



2) Position the grip around hook



3) Position chute assembly as shown.

Includes knob (1), and washer and locknut (2). Install the bolts from the inside of the discharge chute assembly so that the washers and the locknuts are on the outside of the chute. Important: Do not over tighten the locknuts.

|             |                      |
|-------------|----------------------|
| Quantity: 2 | Oval-head bolts (#1) |
| Quantity: 2 | Curved washers       |
| Quantity: 2 | Handle knobs (#2)    |



### Checking the Control Cable

Check the Control Cable after the first hour, and then adjust it if necessary thereafter. Move the control bar back towards the handle to remove the slack in the control cable. Important: The Control Cable must contain some slack when you disengage the control bar to let the rotor blades stop properly. Adjust the Control Cable by sliding up the spring cover and unhook the spring from the adjuster link. Move to a higher or lower hole on the adjuster link as needed, in order to obtain the 1/16-inch to 1/8-inch (2 mm to 3 mm) gap between the control bar and the handle. Note: Moving the Z-fitting higher decreases the gap between the control bar and the handle; moving it lower increases the gap. Hook the spring to the adjuster link and slide the spring cover over the adjuster link.



## PREPARING THE SNOW BLOWER FOR USE

### Step 1 - Add 12 ounces Oil

**This snow blower requires engine oil to function.** When new from the package, this snow blower contains no oil in the engine crankcase. Add the correct quantity of oil before operating this snow blower for the first time. When replenishing oil for subsequent use of this snow blower, always determine that this snow blower has the correct quantity of oil.

1. Confirm that the snow blower is on a level surface.
2. Unscrew the oil filler/dipstick cap from the engine as illustrated in Figure 1.
3. Use a funnel to add 12 ounces SAE 5W-30. **When the engine crankcase is full, the oil level should reach up to the threads.** (Figure 2)
4. Replace the oil filler/dipstick cap.

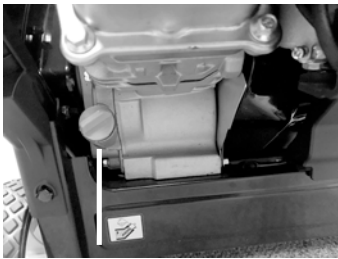


Figure 1 - Unscrew the Oil Cap



Figure 2 - Add Oil



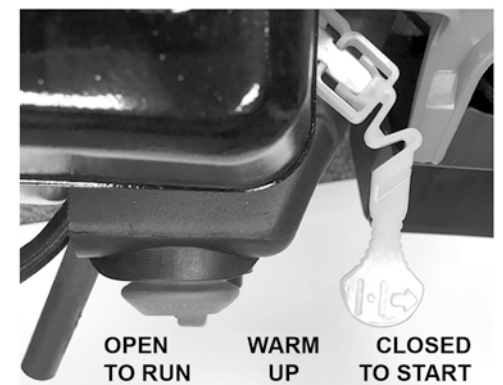
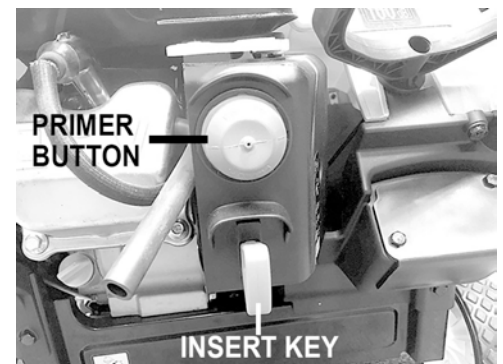
Figure 3 – Add Gas

### Step 2 – Add 51 ounces of Unleaded Gasoline Fuel

Add Unleaded gasoline only with an octane rating of 87 or higher.  
Maximum Capacity: 51 ounces (0.398438 Gallons) (Figure 3)

## STARTING THE SNOW BLOWER

- Step 1 Make sure unleaded gasoline fuel has been added to the tank, and oil has been added.
- Step 2 Insert Key.
- Step 3 Push the Primer Button two times.
- Step 4 Move Choke Lever to CLOSED TO START position.
- Step 5 Pull the STARTER GRIP slowly until resistance is felt and then pull rapidly.
- Step 6 After the engine has started, return STARTER GRIP gently to prevent damage to the starter or housing. DO NOT allow the Starter Grip to snap back. Return it slowly by hand.
- Step 7 Gradually move Choke to middle position, then to the OPEN TO RUN position.
- Step 8 Grasp the Control Bar to engage the snow blower. Release the Control Bar to disengage the snow blower.



## Engaging the Rotor Blades

To engage the rotor blades, hold the Control Bar against the handle (figure 13).



Figure 13

## Disengaging the Rotor Blades

To disengage the rotor blades, release the Control Bar (figure 14).

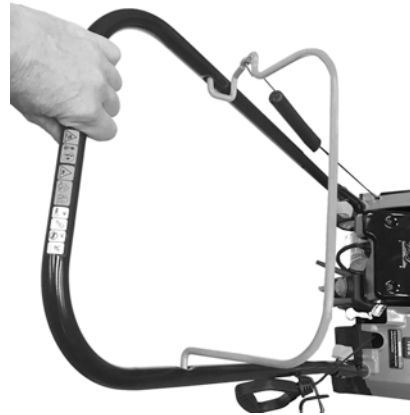


Figure 14

## Prevent Freeze-Up After Use

Let the engine run for a few minutes to prevent moving parts from freezing. Stop the engine, wait for all moving parts to stop, and remove ice and snow from the machine. Clean off any snow and ice from the base of the chute. Rotate the discharge chute left and right to free it from any ice buildup. With the ignition key removed, pull the recoil starter handle several times or connect the electrical cord to a power source and the machine and push the electric start button once to prevent the recoil starter and/or the electric starter from freezing up. In snowy and cold conditions, some controls and moving parts may freeze. Do not use excessive force when trying to operate frozen controls. If you have difficulty operating any control or part, start the engine and let it run for a few minutes.

## SPARK PLUG SPECIFICATIONS

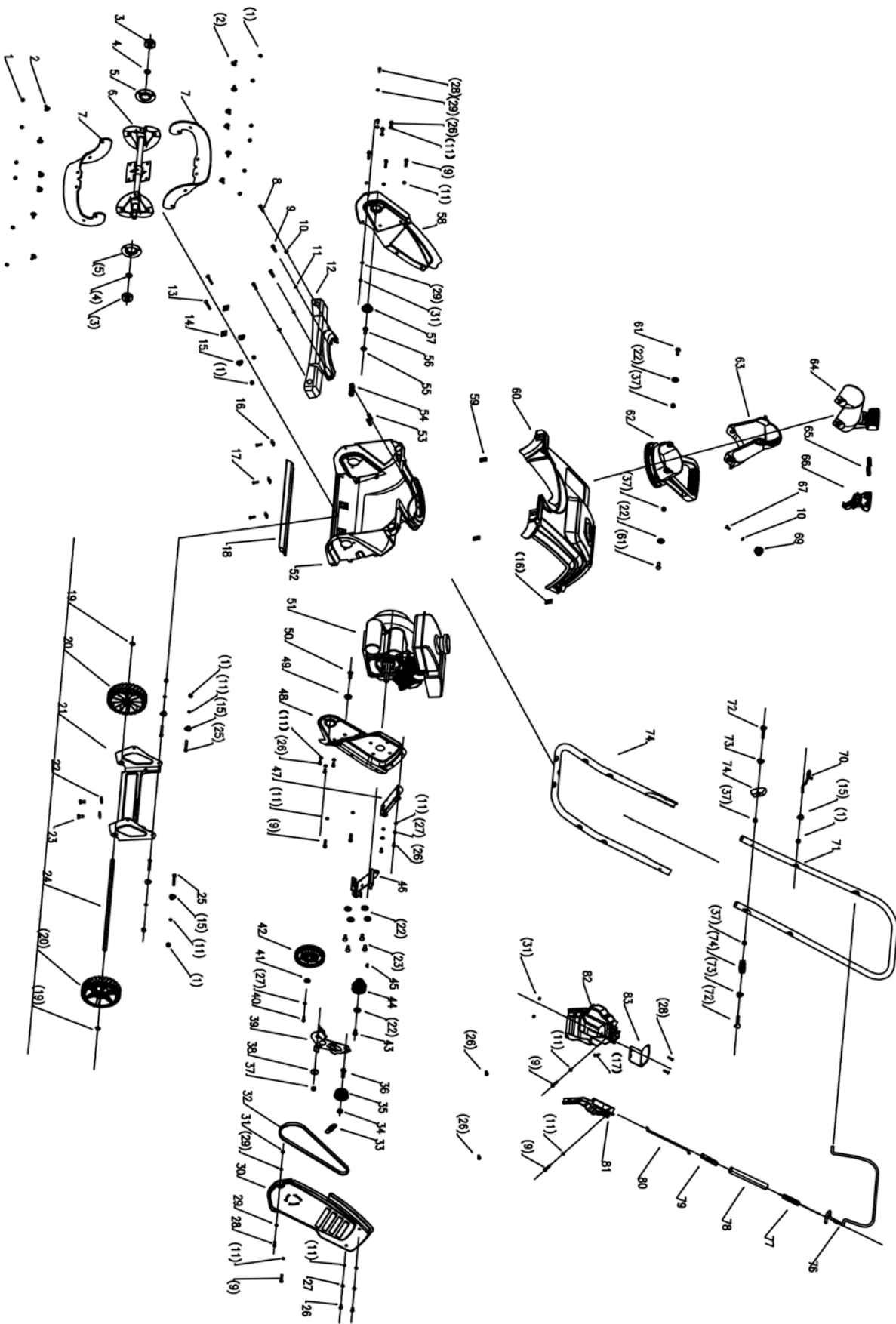
Spark Plug Gap: 0.6 ~ 0.8mm (0.0236 inch ~ 0.0314961 inch)

Spark Plug Torque: 11 ~ 13N.m

Replacement : A5RTC / Champion Z9Y



# PARTS DIAGRAM



# PARTS LIST

| No. | PART NO        | DESCRIPTION              | QTY |
|-----|----------------|--------------------------|-----|
| 1   | GB/T889.1-2000 | Nylon Locknut M6         | 19  |
| 2   | TY18SD25-02.02 | Screw                    | 12  |
| 3   | GB/T276-1994   | Bearing 6203-2RS         | 2   |
| 4   | TY18SD25-02.04 | Bearing Washer           | 2   |
| 5   | TY18SD25-02.06 | Bearing Housing          | 2   |
| 6   | TY18SD25-02.01 | Shaft Assembly           | 1   |
| 7   | TY18SD25-02.03 | Auger Plate              | 2   |
| 8   | GB/T5783-2000  | Screw M6x20              | 2   |
| 9   | GB/T5285-1985  | Screw ST6.3x28-F         | 10  |
| 10  | GB/T96.1-2002  | Flat Washer Ø6           | 3   |
| 11  | GB/T95-2002    | Flat Washer Ø6           | 26  |
| 12  | TY18SD25-06.01 | Head Board               | 1   |
| 13  | GB/T5276-1985  | Screw M6x45              | 2   |
| 14  | TY18SD25-03.02 | Washer                   | 2   |
| 15  | TY18SD25-01.08 | M6 Saddle Washer         | 7   |
| 16  | TY18SD25-05.03 | ST4.8Reed Nutsert        | 4   |
| 17  | GB/T845-1985   | Tapping Screw ST34..8x20 | 4   |
| 18  | TY18SD25-05.02 | Scraper                  | 1   |
| 19  | GB/T894.1-1986 | Dowel Pin Ø12            | 2   |
| 20  |                | Wheel                    | 2   |
| 21  | TY18SD25-07.01 | Support Plate            | 1   |
| 22  | GB/T96.1-2002  | Flat Washer Ø8           | 10  |
| 23  | GB/T5783-2000  | Screw M8x16              | 6   |
| 24  | TY18SD25-07.02 | Drive Axle               | 1   |
| 25  | GB/T5783-2000  | Screw M6x45              | 4   |
| 26  | GB/T5783-2000  | Screw M6x12              | 12  |
| 27  | GB/T93-1987    | Spring Washer Ø6         | 5   |
| 28  | GB/T5783-2000  | Screw M5x14              | 4   |
| 29  | GB/T95-2002    | Flat Washer Ø5           | 4   |
| 30  | TY18SD25-11    | Cover L                  | 1   |
| 31  | GB/T889.1-2000 | Nylon Locknut M5         | 4   |
| 32  |                | Drive Belt               | 1   |
| 33  | TY18SD25-04.06 | Extension Spring         | 1   |
| 34  | GB/T889.1-2000 | Locknut M10              | 1   |
| 35  | TY18SD25-04.03 | Flat Idler               | 1   |
| 36  | GB/T5783-2000  | Screw M10x30             | 1   |
| 37  | GB/T889.1-2000 | Locknut M8               | 5   |
| 38  | TY18SD25-04.05 | Extension Plate Bushing  | 1   |
| 39  | TY18SD25-04.04 | Auger Idler Arm          | 1   |
| 40  | GB/T5783-2000  | Screw M6x16              | 1   |
| 41  | GB/T96.1-2002  | Flat Washer Ø6           | 1   |

| No. | PART NO        | DESCRIPTION            | QTY |
|-----|----------------|------------------------|-----|
| 42  | TY18SD25-04.02 | Rotor Pulley           | 1   |
| 43  |                | Screw 5/16-24x20       | 1   |
| 44  | TY18SD25-04.01 | Motor Pulley           | 1   |
| 45  | GB/T1099.1     | Key                    | 1   |
| 46  | TY18SD25-04.07 | Belt Baffle            | 1   |
| 47  | TY18SD25-04.08 | Cover L Permanent Seat | 1   |
| 48  | TY18SD25-03.03 | Cover L                | 1   |
| 49  | GB/T95-2002    | Flat Washer Ø12        | 1   |
| 50  | GB/T5276-1985  | Screw M8x20            | 1   |
| 51  |                | Gasoline Engine        | 1   |
| 52  | TY18SD25-05.01 | Main Housing           | 1   |
| 53  | TY18SD25-06.04 | Spring                 | 2   |
| 54  | TY18SD25-06.03 | Damping Mat            | 1   |
| 55  | GB/T95-2002    | Flat Washer Φ10XΦ20X2  | 1   |
| 56  | GB/T5783-2000  | Screw M10x20           | 1   |
| 57  | TY18SD25-02.05 | Bearing Lock Ring      | 1   |
| 58  | TY18SD25-03.04 | Cover R                | 1   |
| 59  | TY18SD25-10    | M6 Reed Nutsert        | 2   |
| 60  | TY18SD25-09    | Cover                  | 1   |
| 61  | GB/T5783-2000  | Screw M8x20            | 2   |
| 62  | TY18SD25-06.02 | Chute Base             | 1   |
| 63  | TY18SD25-08.02 | Chute                  | 1   |
| 64  | TY18SD25-08.01 | Upper Deflector        | 1   |
| 65  | TY18SD25-08.04 | Chute Spring           | 2   |
| 66  | TY18SD25-08.03 | Chute Knob             | 1   |
| 67  | GB/T5276-1985  | Screw M6x16            | 1   |
| 69  | TY18SD25-08.05 | Chute Knob             | 1   |
| 70  | TY18SD25-01.07 | Supporting Disk        | 1   |
| 71  | TY18SD25-01.01 | Upper Handle           | 1   |
| 72  | TYSG7024-107   | T-screw                | 2   |
| 73  | TYSG7024-106   | M8 Saddle Washer       | 2   |
| 74  | TYSE13A-12     | Knob                   | 2   |
| 75  | TY18SD25-03.01 | Lower Handle           | 1   |
| 76  | TY18SD25-01.02 | Walk Stent             | 1   |
| 77  | TY18SD25-01.03 | Cable Spring           | 1   |
| 78  | TY18SD25-01.04 | Cable Sleeve           | 1   |
| 79  | TY18SD25-01.05 | Adjustable Line Board  | 1   |
| 80  | TY18SD25-01.06 | Cable                  | 1   |
| 81  | TY18SD25-12    | Side Cover Baffle      | 1   |
| 82  | TY18SD25-13    | Permanent Seat         | 1   |
| 83  | TY18SD25-14    | Plate                  | 1   |

## **EMISSION CONTROL SYSTEM WARRANTY BUFFALO CORPORATION**

### **Your Warranty Rights and Obligations**

The California Air Resources Board, U.S. EPA and Buffalo Corp are pleased to explain the Emission Control System Warranty on your 2019 model year outdoor power equipment engine.

#### **California**

In California, new spark-ignited small off-stringent anti-smog standards.

#### **Other States, U.S. Territories**

In other areas of the United States, your engine must be designed, built and equipped to meet the U.S. EPA emission standards for spark-ignited engines at or below 19 kilowatts.

#### **All of the United States**

Buffalo Corp must warrant the emission control system on your power equipment engine for the periods of time listed below provided there has been no abuse, neglect or improper maintenance of your power equipment engine. Where a warrantable condition exists, Buffalo Corp will repair your power equipment engine at no cost to you including diagnosis, parts and labor.

Your emission control system may include parts such as: carburetors or fuel injection system, ignition system, catalytic converters, fuel tanks, valves, filters, clamps, connectors, and other associated components. Also, included may be hoses, belts, connectors, sensors, and other emission-related assemblies.

#### **Manufacturer's Warranty Coverage**

The emission control system is warranted for two years. If any emissions-related part on your engine is defective, the part will be repaired or replaced by Buffalo Corp.

#### **Owner's Warranty Responsibility**

As the power equipment engine owner, you are responsible for the performance of the required maintenance listed in your owner's manual. Buffalo Corp recommends that you retain all receipts covering maintenance on your power equipment engine, but Buffalo Corp cannot deny warranty solely for the lack of receipts or for your failure to ensure the performance of all scheduled maintenance. As the power equipment engine owner, you should however be aware that Buffalo Corp may deny your warranty coverage if your power equipment engine or a part has failed due to abuse, neglect, improper maintenance or unapproved modifications. You are responsible for presenting your power equipment engine to distribution center or service center authorized by Buffalo Corp as soon as the problem exists. The warranty repairs should be completed in a reasonable amount of time, not to exceed 30 days. If you have any questions regarding your warranty rights and responsibilities, you should contact a customer service representative at 1-866-460-9436 or email [info@buffalotools.com](mailto:info@buffalotools.com)

#### **DEFECTS Warranty Coverage**

Adopted by the Air Resources Board, Buffalo Corp warrants to the ultimate purchaser and each subsequent purchaser that the small off-road engine (SORE) (1) has been designed, built and equipped so as to conform with all applicable regulation; and (2) is free from defects in materials and workmanship that cause the failure of a warranted part to conform with those regulations as may be applicable to the terms and conditions stated below. (a) The warranty period begins on the date the engines is delivered to an ultimate purchaser or first placed into service. The warranty period is two years. (b) Subject to certain conditions and exclusions as stated below, the warranty on emissions related parts is as follows:

- (1) Any warranted part that is not scheduled for replacement as required maintenance in your Owner's Manual is warranted for the warranty period stated above. If the part fails during the period of warranty coverage, the part will be repaired or replaced by Buffalo Corp according to Subsection (4) below. Any such part repaired or replaced under warranty will be warranted for the remainder of the period.
- (2) Any warranty part that is scheduled only for regular inspection in your period stated above. Any such part repaired or replaced under warranty will be warranted for the remaining warranty period.
- (3) Any warranted part that is scheduled for replacement as required maintenance in your Owners Manual is warranted for the period of time before the first

scheduled replacement date for that part. If the part fails before the first scheduled replacement, the part will be repaired or replaced by Buffalo Corp. according to the Subject (4) below. Any such part repaired or replaced under warranty will be warranted for the remainder of the period prior to the first scheduled replacement point for the part.

(4) Repair or replacement of any warranted part under the warranty provisions herein must be performed at a warranty station at no charge to the owner.

(5) Notwithstanding the provisions herein, warranty services or repair will be provided at all of our distribution centers that are franchised to service the subject engines.

(6) The engine owner must not be charged for diagnostic labor that leads to the determination that a warranted part is in fact defective, provided that such diagnostic work is performed at a warranty station.

(7) Buffalo Corp. is liable for damages to other engine components proximately caused by a failure under warranty of any warranted part.

(8) Throughout the engine warranty period stated above, Buffalo Corp. will maintain a supply of warranted parts sufficient to meet the expected demand for such parts.

(9) Any replacement part may be used in the performance of any warranty maintenance or repairs and must be provided without charge to the owner. Such use will not reduce the warranty obligations of Buffalo Corp.

(10) Add-on or modified parts that are not exempted by the Air Resources Board may not be used. The use of any non-exempted add-on or modified parts by the ultimate purchaser will be grounds for disallowing a warranty claims. Buffalo Corp will not be liable to warrant failures of warranted parts caused by the use of a non-exempted add-on or modified part.

(11) The manufacturer issuing the warranty shall provide any documents that describe that manufacturer's warranty procedures or policies within five working days of request by the Air Resources Board.

#### **EMISSION WARRANTY PARTS LIST**

(1) Fuel Metering System:

(a) Gasoline carburetor assembly and its internal components

(b) Carburetor gaskets

(c) Fuel line

(d) Clamps

(e) Fuel tank

(f) Fuel line fittings

(g) pressure regulator (if equipped)

(h) Mixer assembly and its internal components (if equipped)

(2) Air induction system including: (a) Intake pipe/manifold

(b) Air cleaner

(3) Ignition system including: (a) Spark plug (b) Ignition coil

(4) Catalytic muffler assembly including: (a) Muffler gasket (b) Exhaust manifold (c) Catalytic converter if available

(5) Crankcase breather assembly including (a) Breather connection tube

(6) Fuel tank evaporative emissions control system including:

(a) Purge valves (b) Carbon canister (c) canister Mounting Brackets (d) Fuel Cap (e) Fuel Tank

(7) Miscellaneous items used in above systems including: (a) Switches (b) Hoses, belts connectors, and assemblies

(8) Air injection system (a) Pulse valve

201903