

ITEM # SWDCB4 CHAIR ASSEMBLY

Identify all components before assembly.



CHAIR



SEAT



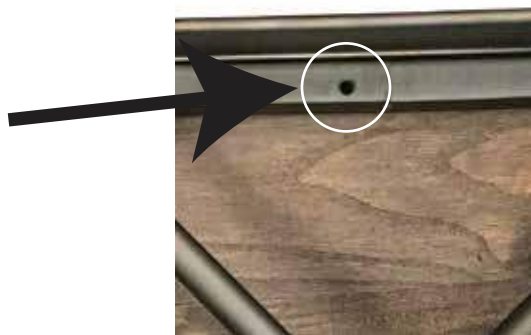
SCREWS

COMPONENTS FOR EACH CHAIR		
#1)	CHAIR	1 PIECE
#2)	WOOD SEAT	1 PIECE
#3)	SCREWS	14 PIECES

WEIGHT CAPACITY CHAIR : 330 LBS

- 1) Locate chair, seat and pack of 14 screws. You will need a Phillips screwdriver or a drill with a Phillips drill bit.

- 2) Turn chair upside down and position wood seat.



- 3) Loosely attach all screws. When all 14 screws have been attached and seat is secure, tighten all remaining screws.



- 4) Repeat assembly for remaining chairs.